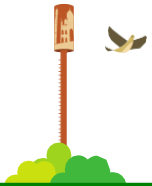


Critical Telecom infrastructure for Tower Co and Regulatory challenges



27th September 2024



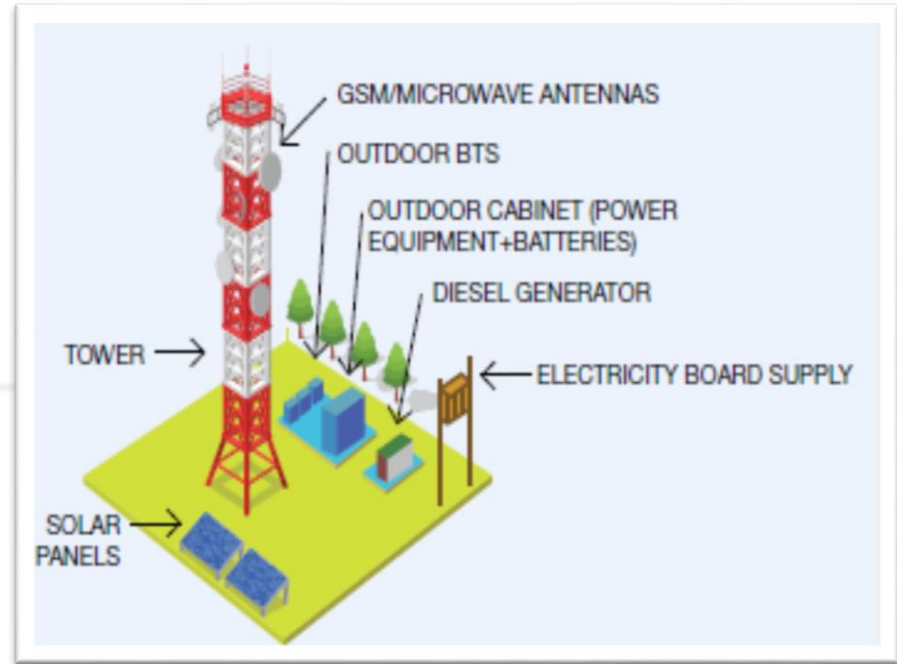
Putting India First

Critical infrastructures for Tower Co or IP1

IP refers to the physical and virtual resources supporting data, voice, and video transmission across networks.

It includes cell towers, Antennas, Power Equipment, Batteries, Diesel generators, solar panels and network equipment.

Essential for connectivity, supporting mobile networks, internet services, and emergency communications



Putting India First

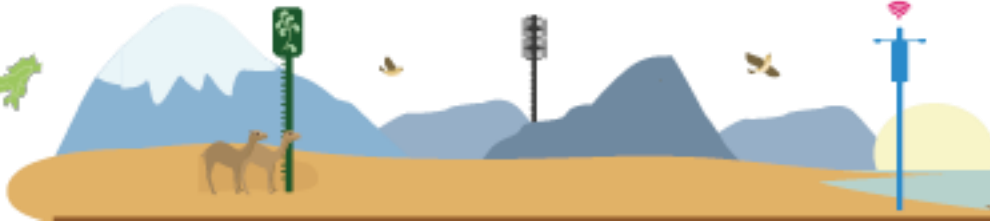


Critical Components of Tower Co



- **Cell Towers:** Structures that house antennas and other equipment for wireless communication.
 - **Power Supply:** Backup generators and batteries to ensure continuous operation.
 - **Cooling Systems:** Maintain optimal temperature for equipment.
 - **Security:** Physical security measures to protect infrastructure from vandalism and theft.
-

Putting India First



Regulatory issues and challenges

1 Cost of Doing Business- Electricity Tariffs and processes (incl. billing disputes/arrears)

- ✓ Provide industrial tariffs and priority electricity connections for Tower Co, ensuring 24/7 supply, abolishing security deposits, offering pre-paid recharge facilities, and treating them on par with hospitals, IT companies, and Data Centers.
- ✓ Implement metering and billing regulations for DISCOM to avoid delays and ad hoc billing and resolve disputes. Smart meters across all connections.

2 Vandalism, safety, and security of Tower Co

- ✓ The rise in theft and vandalism disrupts networks and telecom infrastructure rollouts
- ✓ Tower Co's assets, infrastructure, and personnel to be protected, treat damaging acts as criminal offences & non-bailable, and have local administration support and reimburse losses through insurance.

4

3 Property / Tower Tax -State/ municipal taxes and penalties on Tower co

- ✓ Local municipalities are levying arbitrary & exorbitant Property taxes / Penalties at different rates across various states. States (e.g., WB, MP&CG, Maharashtra, and Karnataka) have levied property /tower taxes.
- ✓ Although the new Telecom Act 2023 has a provision for no Property taxes it has been ignored until now.

Operations in Challenging Times

Maintaining 99.965% network availability despite natural calamities across the country



indus
TOWERS



Network restoration efforts during floods in Assam



Network restoration efforts during Michaun Cyclone in Tamil Nadu



Site operations during heavy snowfall

Services in Frontier Areas

Services in tough terrain & frontier areas to enable connectivity for all



Sites in Nubra valley,
~10,000 ft above sea level



Punguk-Hanle village along
Indo-China border,
~14,600 ft above sea level



Kharu Tehsil in Ladakh,
13,000 ft above sea level

Thank You



Putting India First